

Acta Cryst. (1996). **A52**, 957

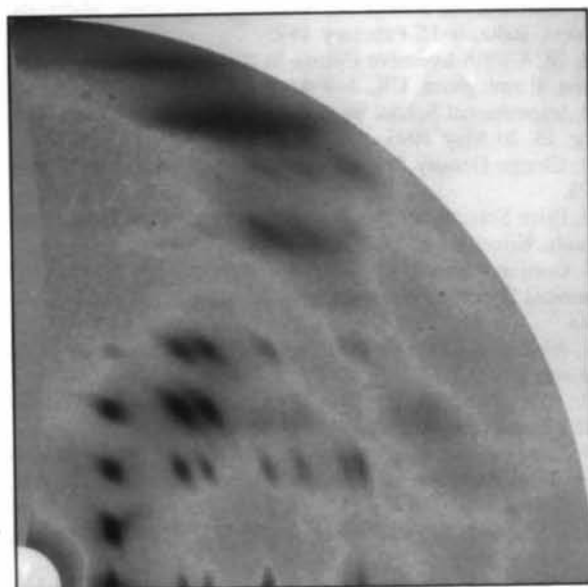
Analysis of disorder in biopolymer fibers. Erratum

W. J. STROUD and R. P. MILLANE* at Whistler Center for Carbohydrate Research, Purdue University, West Lafayette, Indiana 47907-1160, USA. E-mail: rick@moa.foodsci.purdue.edu

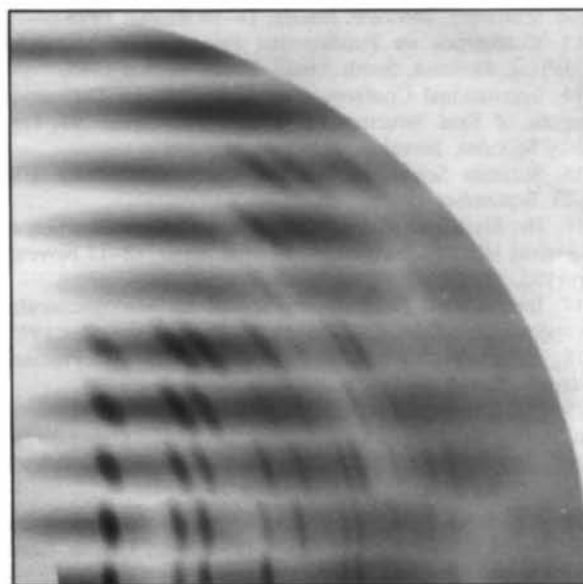
(Received 22 August 1996)

Abstract

Fig. 4 of Stroud & Millane [*Acta Cryst.* (1995), **A51**, 790–800] did not reproduce well. A new figure is printed here.



(a)



(b)

Fig. 4. Diffraction patterns for α -poly(dA) · poly(dT) in one quadrant of reciprocal space. (a) Measured pattern; (b) calculated pattern as in Fig. 3(c).